

**RICOH**  
imagine. change.



# RICOH Interactive Whiteboard

**A6510**

**A7510**

**A8610**

# RICOH Interactive Whiteboard A Series—reborn with improved usability and security

The advanced second generation EDLA-certified RICOH Interactive Whiteboard A Series offers enhanced security and supports a wide range of applications, making it ideal for corporate and educational settings. Designed to foster seamless communication and maximise collaboration, these new models are more user-friendly than ever, with intuitive smartphone-like operation that ensures a smooth and efficient experience.

i

## RICOH Interactive Whiteboard A Series (Second Generation)

### KEY FEATURES

- Embedded Android OS and Google EDLA certified
- Expandable with Windows controllers
- Wirelessly connect to PCs and peripherals at hand
- As a starting point for communication, type in your idea instantly and share on the fly



A6510

A7510

A8610

# Powerful and Feature-Rich Hardware Design



## User comfort

The blue light cut function reduces eye fatigue. The anti-fingerprint finish on the screen surface resists fingerprints and smudges, and if smudges do stick, they can be removed with a light wipe.



## Large RAM/ROM

Peak performance with 8GB of RAM and 128GB of ROM for fast response and stable operation.



## ENERGY STAR® certified

This is an environmentally-friendly ENERGY STAR certified product.



## EDLA certified

Google Mobile Service (GMS) is available and comes pre-installed with useful Google applications, including Google Chrome and others. Google Play Protect also ensures that apps and devices are secure.



## Connect wirelessly

Supports Bluetooth 5.2 for wireless connection to audio and other devices. It also supports the latest Wi-Fi 6 standard for high-speed communication.



## Powerful audio

Equipped with a pair of 15 W speakers for clear high-definition audio.



## Versatile connectivity with a front-facing interface

Supports a range of interfaces such as HDMI, USB, microphone and the latest USB Type-C. The interface ports are mounted on the front of the IWB to make it easy to connect an external device.



## 40-point multi-touch functionality with a smooth and comfortable operation

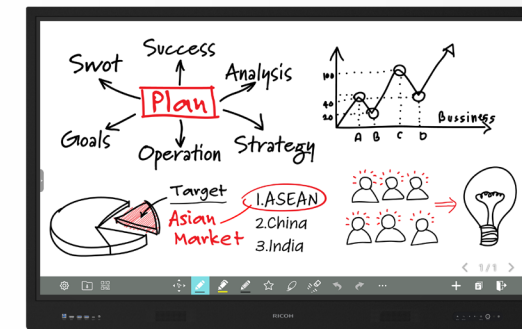
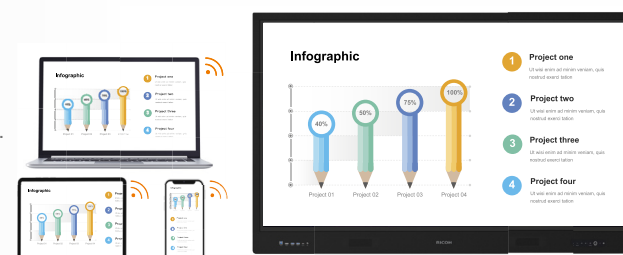
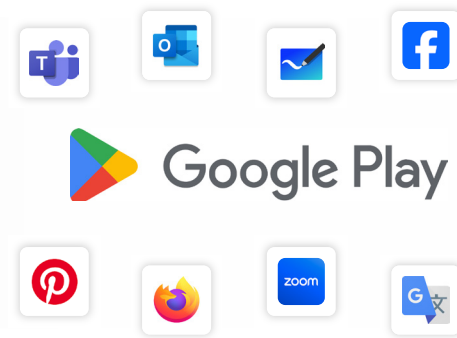
Up to 40 simultaneous touch points enable more active collaboration with multiple people writing at the same time. It works seamlessly with major operating systems including Windows, Android, Linux, Mac, and Chrome.



# Plug and Play Android Apps

## Useful pre-installed applications

The embedded Android OS allows you to use a wide range of pre-installed applications such as whiteboard and wireless presentation applications right out of the box. Apps are easily accessible from a list screen and can also be managed in folders for each purpose.



## Whiteboard

## Easy-to-use digital whiteboard

The digital whiteboard is an excellent tool to maximise collaboration at meetings and classes. When the meeting or class is over, you can save the contents to the cloud for future sharing.



## Floating Toolbar

A toolbar with pen and eraser functions and the ability to insert shapes. The handwriting text and shape conversion functions allow you to convert handwritten text and shapes to digital text and shapes. Once converted, the size, colour, and placement can be adjusted.



### Option Box

Includes useful classroom and meeting tools such as rulers, sticky notes, mind maps, PDFs, and table inserts. It also includes web search, YouTube viewing, and split-screen capabilities for active collaboration in classrooms and meetings.



## Navigation Bar

You can move, add, and delete pages, up to 299 pages. Various templates are also available, such as background colour change, sheet music, soccer court, and so on.



## Picture-in-picture

### Easier information sharing

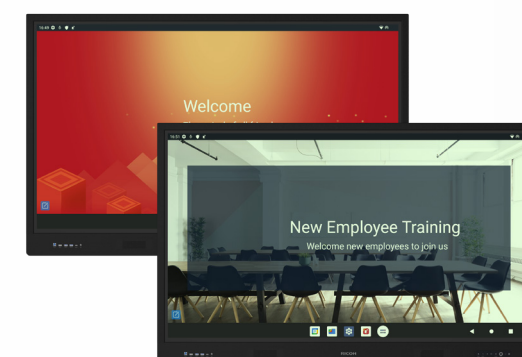
External video input can be displayed separately on a small screen in a portion of the screen. This allows you to review multiple pieces of information at the same time, enabling efficient information sharing in various situations such as meetings, classes, and presentations.



**EShare**

## Seamless wireless presentation and collaboration

You can perform wireless screencasting from any OS, such as Windows, iOS, Mac, Android, Chrome, and Ubuntu. Make your meetings and classes even more efficient thanks to the ability to display up to four screens at once. Operation of PCs is also available from IWB wirelessly.



## Signage

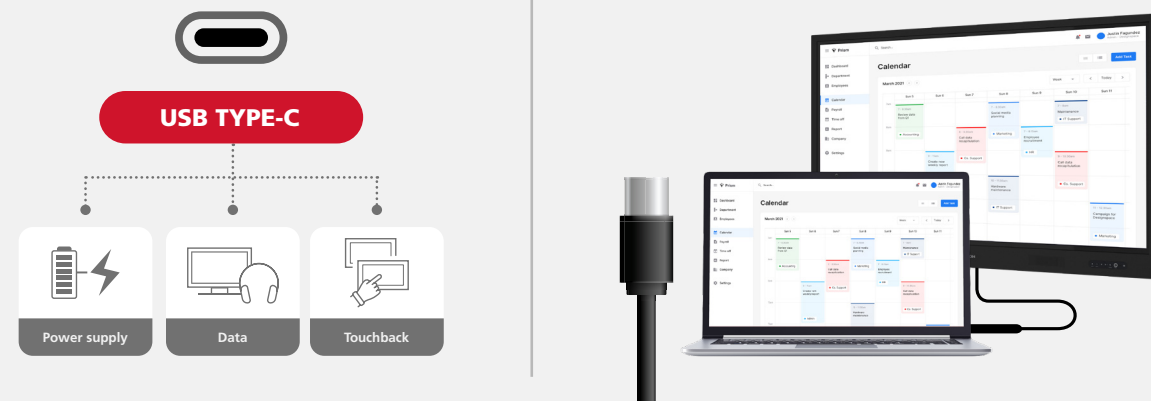
## Effectively communicate information on a large screen

Text information, images, and videos can be inserted and displayed on the screen based on a template. It can be used as a welcome board or to communicate information at events or during emergencies.

# Flexible Functions and Solutions

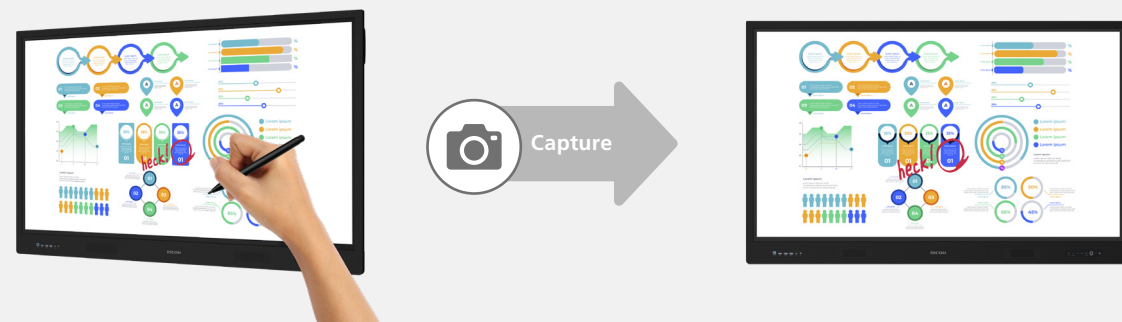
## Frustration-free user experience with USB Type-C connection

The included USB Type-C cable allows you to simultaneously send images, pass along touch controls, and supply power to the device all with a single cable. By simply plugging in, you can freely perform operations on your PC directly from the IWB.



## Overlay annotation and smooth capture

The embedded annotation tool allows you to annotate on any displayed image. You can easily capture annotations on a displayed image and then paste the image onto the whiteboard. This can be saved as the meeting minutes after finishing discussions.

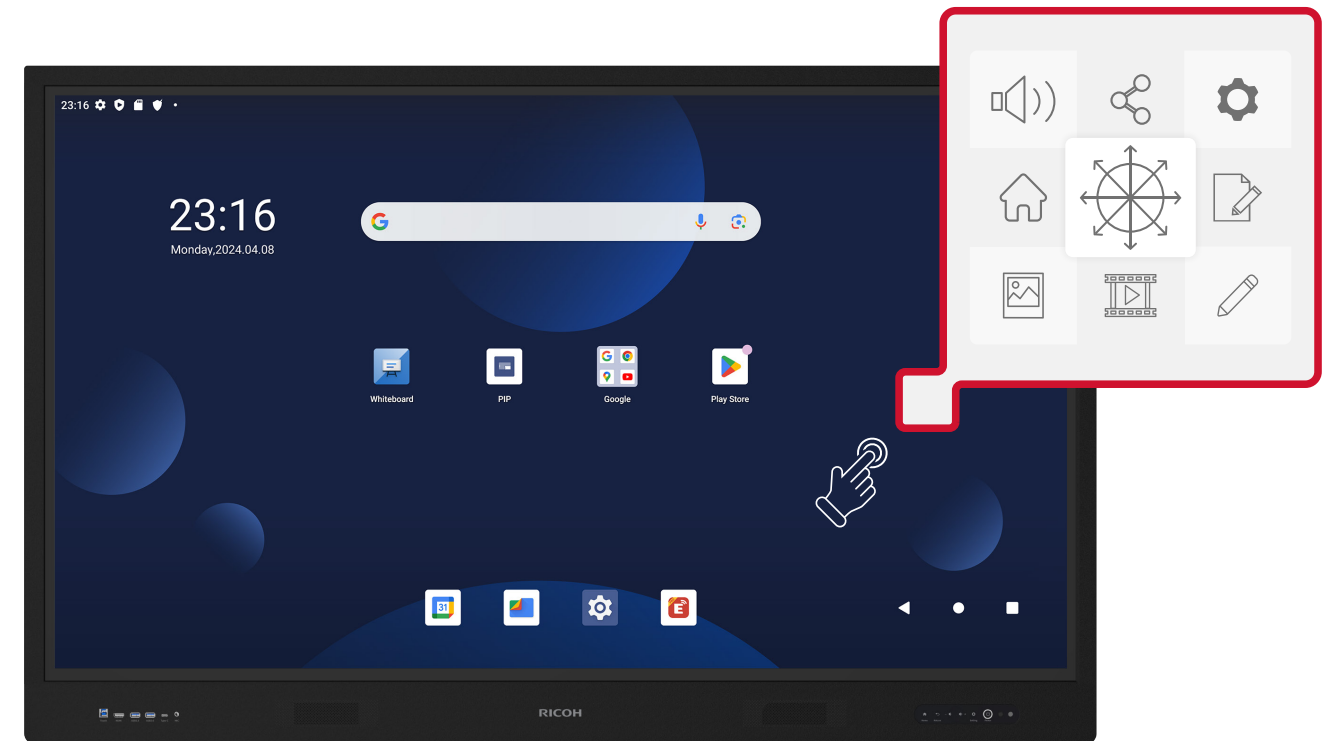


## Customising the IWB by user account

Log in with the account you added to the IWB to access your personal environment. If the IWB is shared by multiple users, you can add up to 25 accounts to improve usability and prevent data confusion.



# Various Use Scenes



## When you need it, where you need it, more convenience with the Floating Bar

The Floating Bar is an innovative feature that enhances user interaction with the IWB. This movable tool can be positioned anywhere on the screen and easily shown or hidden as needed. With a long press, users can also customise their own shortcuts for frequently used operations, making the IWB experience even more efficient and personalised.

### OPTION

## RICOH IWB Software Suite for Windows

Dedicated software for Windows OPS with annotation, whiteboard, and wireless projection functions. The top screen of the dedicated launcher provides an easy-to-view, easy-to-use screen display for highly accessible usability.





# About Ricoh

---

Ricoh is empowering digital workplaces by utilising innovative partners and technologies and providing expert services that enable individuals to work smarter from anywhere. With cultivated knowledge and organisational capabilities

nurtured over its 85-year history, Ricoh is a leading provider of digital services, process automation, and information management solutions designed to support digital transformation and optimise business performance.

## Contact us now

---

For more information,  
visit **ricoh-ap.com**

### **Ricoh Asia Pacific Pte Ltd**

20W Pasir Panjang Road,  
#04-28 Mapletree Business City,  
Singapore 117439

